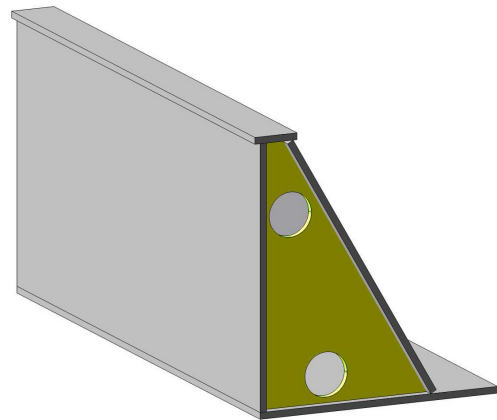
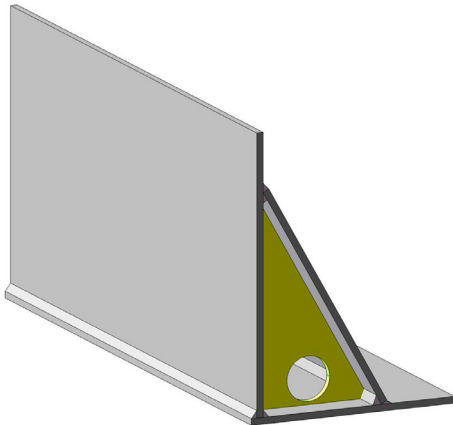


OPTIGREEN EDGE ELEMENT

made from stone fibre slabs (trapezoid or L-shaped)



L-shaped:

Material	pressed stone fibre slabs
Material thickness	L-shaped: Approx. 12 mm
Length (standard)	L-shaped: 3,000 mm
Width (standard)	L-shaped: From 200 - 550 mm
Height (standard)	L-shaped: From 120 - 850 mm
Special dimensions	- Special dimensions available on request - Inner, outer and special corners in accordance with planning specifications
Surface	completely painted
Colours	according to NCS or standard RAL
Custom paints	available on request
Weight	L-shaped: Approx. 10.0 kg/m (height 250 mm) Approx. 18.0 kg/m (height 500 mm)
Quantity/ delivered unit	according to size of order
Delivery form	according to size of order
Storage	protect against mechanical damage

Trapezoid:

Material	pressed stone fibre slabs
Material thickness	Trapezoid: Approx. 10 mm
Length (standard)	Trapezoid: 1,200 mm
Width (standard)	Trapezoid: From 250 - 800 mm
Height (standard)	Trapezoid: From 190 - 1,000 mm
Special dimensions	- Special dimensions available on request - Inner, outer and special corners in accordance with planning specifications
Surface	completely painted
Colours	according to NCS or standard RAL
Custom paints	available on request
Weight	Trapezoid: Approx. 9.0 kg/m (height 250 mm) Approx. 15.0 kg/m (height 500 mm)
Quantity/ delivered unit	according to size of order
Delivery form	according to size of order
Storage	protect against mechanical damage

Area of use

- As edging for extensive and intensive green roofs
- To enclose elevated intensive green roofs (elevated planting beds)
- To separate different floor covering and greening areas

Specific properties

- Absolutely resistant and environmentally-friendly material stone fibre
- Versatile and suitable shapes in series, large-scale and custom manufacture
- Special colours are possible (according to Sto colour fan, or RAL, NCS...).

The preceding details are guideline values established under laboratory conditions. These values are subject to a certain manufacturing tolerance. The data contained in this product information sheet represents Optigreen's technical knowledge at the time of publication. Optigreen reserves the right to change and update details in accordance with new insights and to modify specified properties accordingly. No liability accepted for misprints.

Optigrün international AG

Am Birkenstock 15 – 19,
72505 Krauchenwies-Göggingen
Tel. +49 7576 772-0, Fax +49 7576 772-299, info@optigruen.de

Optigreen Limited (Service UK only)

Suite G5 Albany Chambers, 26 Bridge Road East
Welwyn Garden City (Herts), AL7 1HL
Phone +44 203 5899400, Fax +44 207 1171664, info@optigreen.co.uk

